



# 2001 Tiara 5200 Express

Boat Type: Cruiser

Address: Kent Island - Our Docks, MD, US

Price: \$285,000



## OVERVIEW

3 Stateroom Layout Makes This Tiara 5200 Express A Great Family Cruising Yacht. The Interior Is Big, Roomy & Finished In Teak & Holly Like Only A Tiara Offers.

The Cockpit Seating Area's Are Large & Offers A Tremendous Amount Of Space & Flow From The Helmdeck To The Cockpit.

Cat 800HP Version Heading To Our Kent Island Office To Be SOLD. A Deal To Be Had If Your A Tiara Buyer! Includes A Novurania Center Console Tender With 40hp Yamaha 4 Stroke!

# SPECIFICATIONS

## Basic Information

Manufacturer:	Tiara	Vessel Name:	
Model:	5200 Express	Boat Type:	Cruiser
Year:	2001	Hull Material:	Fiberglass
Category:	Power	Hull Type:	
Condition:	Used	Hull Color:	
Location:	Kent Island - Our Docks, MD, US	Designer:	Tiara Yachts
Available for sale in U.S. waters:	Yes	Flag of Registry:	

## Dimensions & Weight

Length:	52 ft - 15.85 meter	Draft - max:	5 ft 1 in - 1.55 meter
LOA:	-	Bridge Clearance:	-
Beam:	15 ft 11 in - 4.85 meter	Dry Weight:	38600 ft - 11765.28 meter

## Engine

Make:	Caterpillar	Engine Type:	Inboard
Model:	3406 E	Drive Type:	
Engine(s):	2	Fuel Type:	Diesel
Hours:	2265	Horsepower:	800 (Individual), 1600 (combined)
Cruise Speed:	34 MPH	Max Speed:	37 MPH
Range:	326 MI	Joystick Control:	No

## Tank Capacities

Fuel Tank:	700 gallons - 1 tank(s)	Holding Tank:	80 gallons - 1 tank(s)
Fresh Water Tank:	200 gallons - 1 tank(s)		

## Accommodations

Total Cabins:	-	Total Berths:	-
Total Heads:	2	Captains Cabin:	No

## DESCRIPTIONS

### Accommodations

Rare 3-stateroom layout.

Steps down to spacious salon, warm features of dark cherry interior with teal & holly floors. The large comfy dinette is to port, with the fully purposed galley to starboard.

The entertainment center has a built-in television, VCR, and Bose stereo system with multi disc CD changer and Bose speakers.

Two guest staterooms with twin double berths (covert to king) are port & starboard aft of salon. A guest head is aft and starboard with stall shower, sink, vanity and vacu-flush toilet and two access doors.

Master suite is forward features a Queen pedestal bed. Electric lifter for storage below bed. Larger private master head is to port with fully enclose shower, and vacu-flush toilet. Hanging lockers starboard enclosed shelves to port, mirrored vanity. Built-in flat screen TV, and heat-AC controls

SAT TV

4 Flat Screens (each stateroom & salon)

Washer/Dryer

## **Galley**

The galley is a well thought-out working area. It includes corian countertops and sink, and a recessed three burner electric cooktop. There is a built in coffee maker, microwave oven and Sub-Zero refrigerator and freezer drawers.

## **Deck**

The cockpit is designed around functionality and comfort.

To port a large L-lounge sits six comfortably, with plenty of stowage below.

The adjacent dual Admiral Stidd helm seat features 8" of forward and vertical movement and has a backrest that reclines 20 degrees.

The helm with plenty of open space for electronics, tilts aft to provide easy access to wiring.

A wet bar is just aft of the helm, featuring sink with cutting board, glass and bottle stowage, ice maker, refrigerator, and 120V outlet.

The lower cockpit has molded-in forward and aft-facing seating & Pop Up Tables

A handy transom storage trunk features 100 cubic feet of easy access storage.

60" swim platform includes a recessed hand rail and concealed slide-out S.S. swim ladder.

Novurania Center Console Tender & 40hp Yamaha Included

Bow Sunpad

## **Engines & Mechanical**

Powered by two CAT 3406 E engines which produce 800hp at 2300rpm&#39;s.

There is a Power assisted Teleflex hydraulic steering system with 22" S.S. destroyer helm wheel. Bronze "I" struts and highspeed axe head rudders.

Tiara uses Aquamet 22 H.S. 2-3/4" prop shafts and water-cooled, face-seal stuffing boxes.

CAT "EMS" dual engine instrumentation give all vital engine statistics and an oil changing system for engines, transmissions, and generator is standard.

The engine room is lined with acoustical insulation and overhead fiberglass liner and lighting system.

Other standard equipment include Racor fuel filters / water seperators mounted on S.S. brackets; raw water intake strainers; vibration mounts on the engine and generator; anti-corrosion barrier coated fuel tanks and two fuel selection valves.

Engine room access is concealed in the lower cockpit lounge seat, or the room can also be entered through the upper cockpit dropdown hatch.

Tiara features custom 24V DC and 120V/240V AC electrical system with master distribution panels in the engine room.

120V 30 amp 65&#39; dockside power

240V AC 50 amp 65&#39; dockside power cord with Glendenning cable recoiler, aft.

30 amp 24V battery charger.

24V DC battery system with gel cell batteries and battery switches.

12V DC system for helm electronics, electrical bonding system, "smart boosting" isolation transformers, and a battery parallel

system.

Onan generator

Forward deck shore power hookups

### **Electronics**

Dual Furuno Navnet GPS, Radar

Simrad AP22 Autopilot

VHF Icom IC-M504

Sat TV

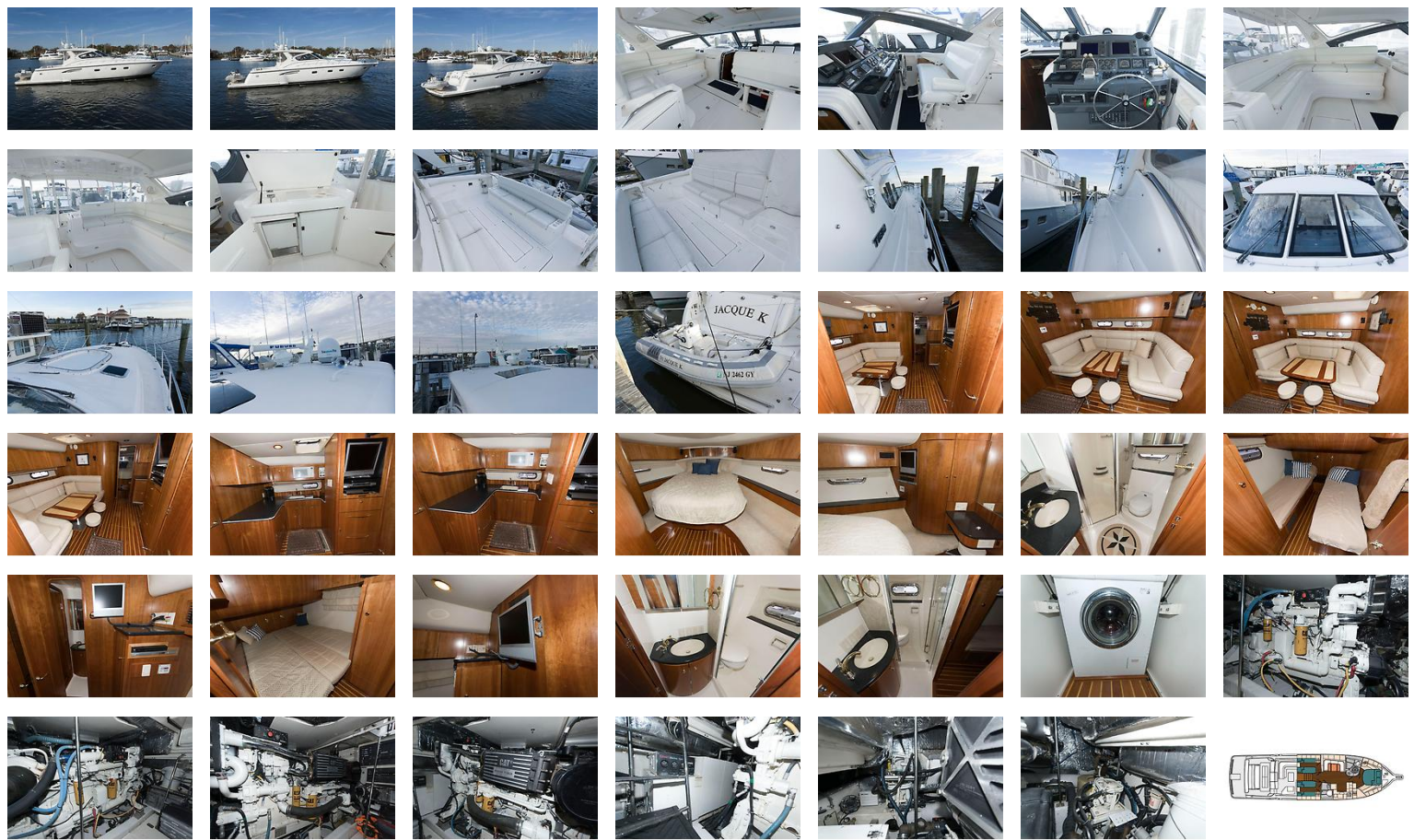
Cockpit Stereo

### **Default**

The Company offers the details of this vessel in good faith but cannot guarantee or warrant the accuracy of this information nor warrant the condition of the vessel. A buyer should instruct his agents, or his surveyors, to investigate such details as the buyer desires validated. This vessel is offered subject to prior sale, price change, or withdrawal without notice.



# GALLERY



# LOCATION MAP



**TODD WITTMAN**  
**Knot 10 Yacht Sales**  
 106 Wells Cove Road (behind Fishermens Inn & Crab Deck Turquoise Buildings)  
 Grasonville, MD, US  
 Office: (844) 815-0508  
 Mobile: (410) 310-6174  
 todd@knot10.com

